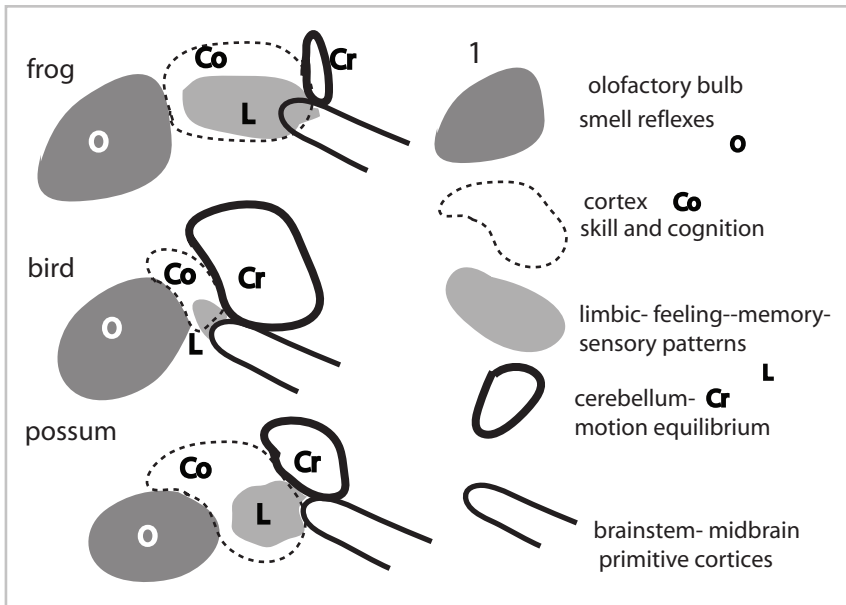


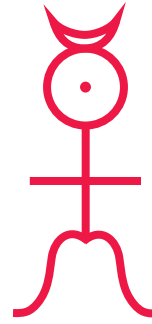
7



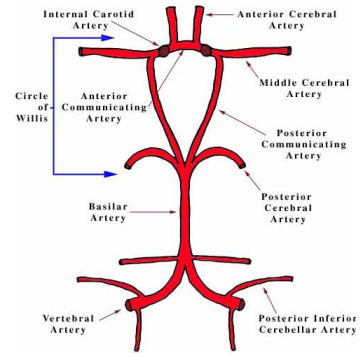


5

- ☉ sun
- ☾ moon
- ♿ mercury
- ♀ venus
- ♂ mars
- ♃ jupiter
- ♄ saturn



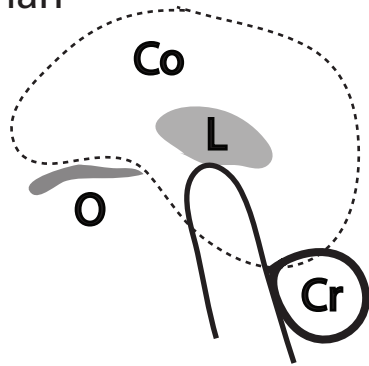
CIRCLE OF WILLIS



The internal carotid (cervical and thoracic) and vertebral systems anastomose around the optic chiasm and infundibulum of the pituitary stalk, forming an arterial polygon known as the circle of Willis. This communicating pathway allows equalization of blood-flow between the two sides of the brain.

human

2

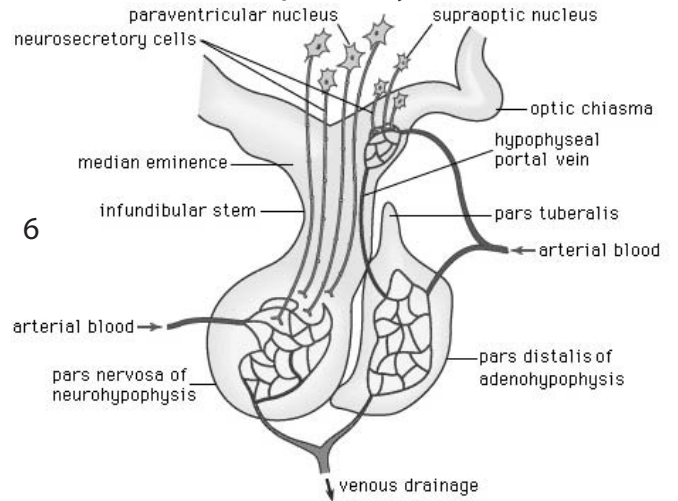


3

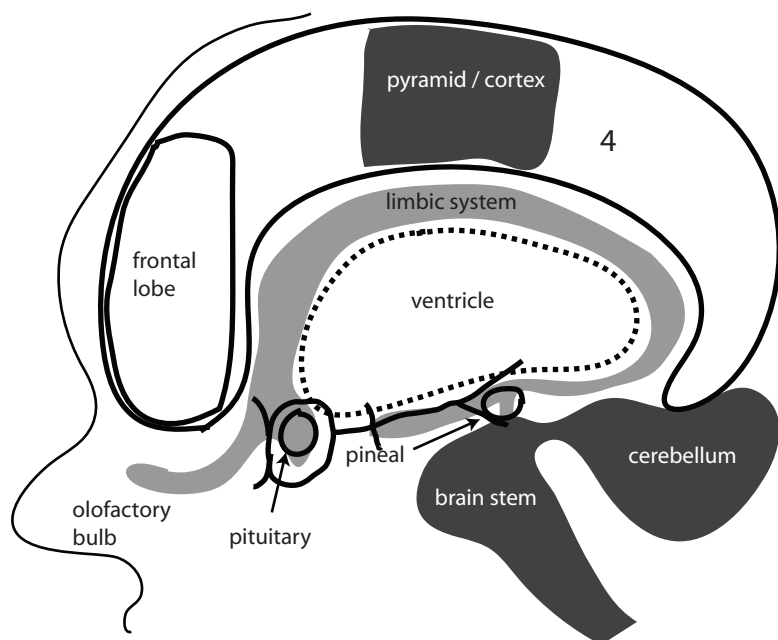
motive- will in the I being
 desire- will in the soul
 drive- will in the life body
 instinct- will in the physical body

spinal cord	stretch reflexes
cerebellum	muscle equilibrium and balance
pyramid cortex	cortex and spinal cord
cortex	fine muscle memory or learned movements
limbic structure	cognition – integration of senses and cognition
(feelings of acceptance or rejection)	memory, feelings and frontal lobe connections (morality)

pituitary



7



Questions : Myth and Mask

1 Read a myth. Make a list of who what where in the story according to your judgment. Have a partner read the list silently while you watch their facial expression. Then choose a mask from the mask filter of emoticons that reflects how it feels to have your list read by another person. Put the number of the emoticon in a journal. .

2 Retell the myth in your own words to your partner. Have them ask you questions about your retelling .Don't answer the questions. Find a mask that reflects your feelings about this process. Journal a few words about your emoticon choice and the feelings around the choice.

3 Retell the myth in your own words but have your partner read the myth while you are retelling it. Have them ask questions which you do not answer. Choose a mask that reflects your feelings about this level of the process. Journal any feelings or images that arise in you.

4 Make a character arc diagram of the myth for two main figures. Have your partner do the same two figures. Then ask each other questions about your individual choices. During the questions interact with your partner. Afterwards, find a mask that best represents your feelings about the interaction. Record any feelings or images.

5 Divide the character arc into narrative, pinch, crisis and resolve segments. Share this with your partner and have them ask questions. During the questions interact with your partner. Afterwards, find a mask that best represents your feelings about the interaction. Record any feelings or images.

6 Using your character arc as a basis, choose a mask for each character in the myth in the stage between the narrative and the crisis. Share these with your partner and have a conversation about the similarities and differences of your mutual choices. Record any feelings or images that arise during the conversation.

7 .Using the myth as a model, tell your partner an autobiographical story that relates to the activity in the myth. Afterwards, share how the shared biographical element changes the tone of the questioning for you. Find a mask to represent your feelings during the conversation.

character arc template - narrative, pinch, crisis, resolve

